



MONTHLY MEMBERSHIP PROGRESS REPORT

District 11 D2

Results as of: 05/31/2018

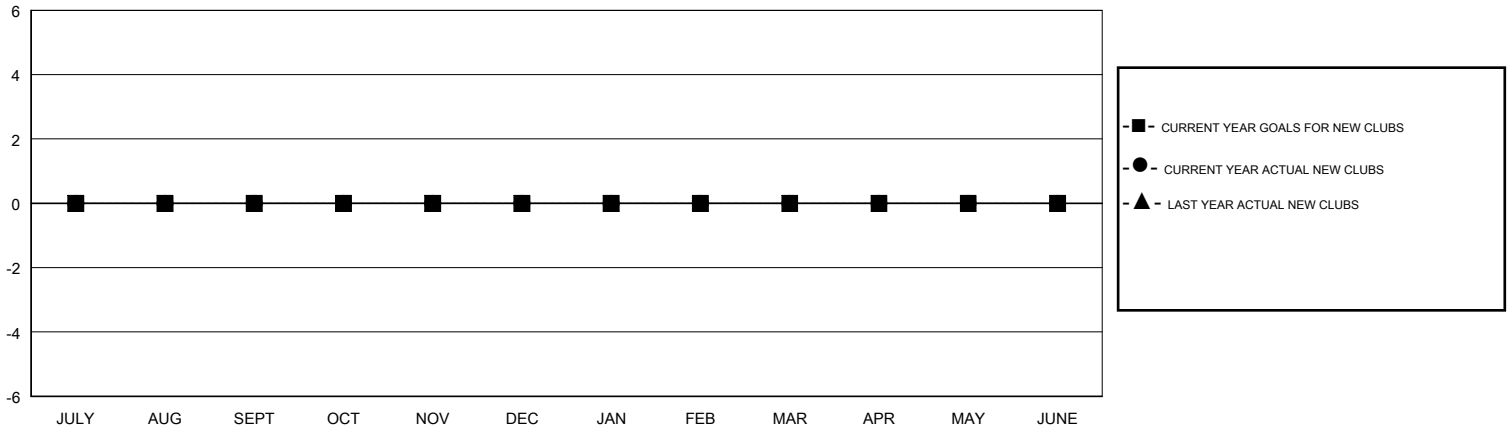
GMT: STEVE ANTON

LOCATION MICHIGAN

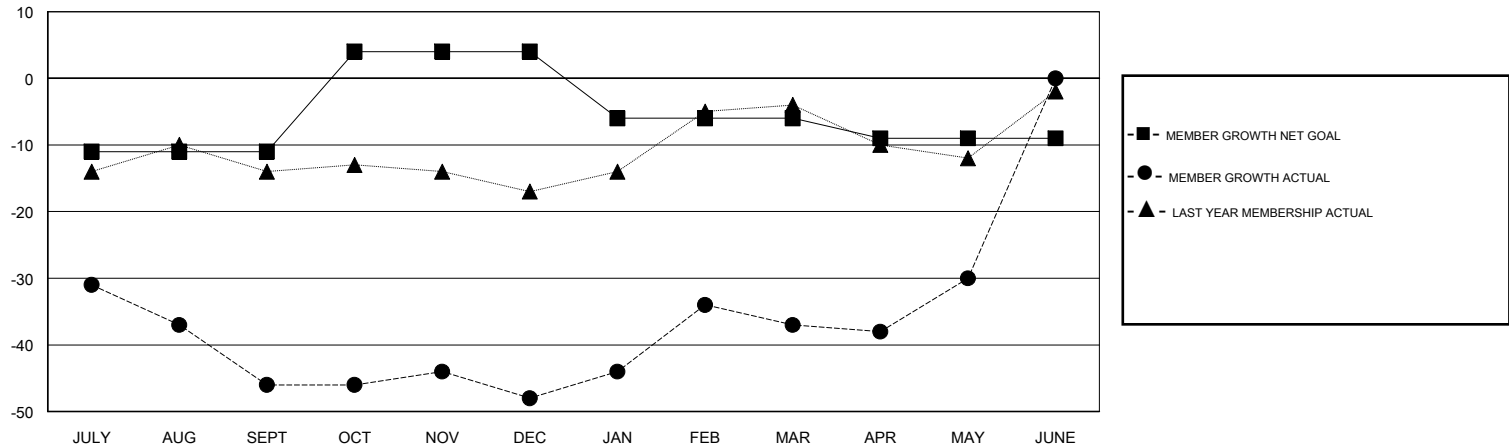
GMT CA

Clubs				Members			
RESULTS FOR 2017-2018				RESULTS FOR 2017-2018			
QUARTER	NEW CLUB GOAL	NEW CLUBS	DROPPED CLUBS	QUARTER	MEMBER GROWTH NET GOAL	MEMBER GROWTH ACTUAL	DROPPED MEMBERS ACTUAL (including transfers)
JULY/AUG/SEPT	0	0	1	JULY/AUG/SEPT	-11	31	69
OCT/NOV/DEC	0	0	1	OCT/NOV/DEC	15	28	29
JAN/FEB/MAR	0	0	0	JAN/FEB/MAR	-10	33	21
APR/MAY/JUNE	0	0	0	APR/MAY/JUNE	-3	28	19

GOALS AND ACTUAL NEW CLUBS CUMULATIVE



GOALS AND ACTUAL MEMBERS CUMULATIVE



DROPPED CLUBS: 2	30 CLUBS OF 46 ADDED 1 OR MORE NEW MEMBERS	<u>GENDER DISTRIBUTION</u> MALE 986 (77.64%) FEMALE 284 (22.36%) Women Percentage Fiscal Year Goal: 22%
<u>DROPPED MEMBERS</u> DECEASED 24 CLUB CANCELLED 4 OTHER 110 TOTAL 138	CLICK HERE FOR CUMULATIVE MEMBERSHIP DATA	TOTAL FAMILY UNIT MEMBERS 221 FAMILY MEMBERS PAYING HALF DUES 113